

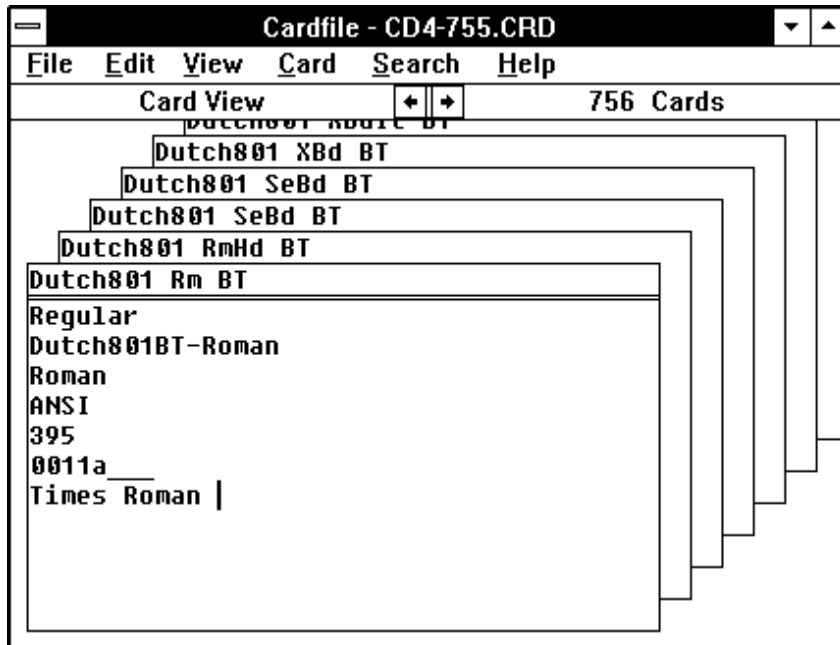


Introduction

CD4-755.CRD is a Windows Cardfile (Version 3.1) database of the entire typeface collection bundled with Draw 4. The proper use of this database requires Windows 3.1 and Cardfile 3.1 (not 3.0) which is included with Windows 3.1. If you wish to open CD4-755.CRD double click on the icon at the top of this document.

What The Data Means

Lets examine the Dutch 801 Rm BT card in CD4-755.CRD.



Dutch801 Rm BT is the Cardfile Index Line. This is also the Windows menu name that displays in your Draw roll-up. This is the name that is always visible when you view your cards since each one sits on top of the other. Each card has an additional 6 lines (some have 7) of data for each of your typefaces. The first line displays the weight which could be Regular, Italic, Bold Italic, and Bold. The second line displays the PostScript printer font name. The third line displays the Windows Style which could be Roman, Modern, Swiss, Script, Decorative, and Don't Care. The fourth line displays the Windows character set which is usually ANSI. The fifth line displays the number of available kerning pairs built into the TrueType or PostScript font. This number can range from 0 to 957. The sixth line is the "Base File Name" for the PostScript version. Most of the TrueType file names for the Bitstream fonts always start with TT and contains the exact same number displayed in each card. The a follows the number for Bitstream PostScript fonts and m for TrueType. Some of the cards in this database also contain the "industry standard name" which appears on the last line. In our example Dutch 801 has an industry standard name of Times Roman. You can search for all the displayed data in each card.

Five Ways To Use Your Data

(1) You thumb through your *Corel Libraries Catalog* for an appropriate typeface for your job. ITC Caslon No. 224 on page F11 fits the bill. Unfortunately this typeface is not installed in Windows or resident on your hard disk. Nor can you discern what the file name is. Select Find from the Search menu and enter casl and then press Enter/Return. You navigate to the Caslon section of your database. Click the right arrow below the Search menu or single click on the appropriate index entry to move to your desired typeface. All the file names for your desired typeface are available. Launch File Manager and navigate to the appropriate sub-directory on your CD-ROM to copy these files to your hard disk. Naturally you still must use the Control Panel, ATM, or FontMinder to install them. If you hate searches select List from the View menu and press c on your keyboard to jump to this section of your database. Then use the scroll bar to move to Caslon 224 and single click on the first entry. Finally select Card from the View menu and up pops the first Caslon 224. The Corel Libraries Catalog sometimes lists a particular typeface starting with ITC. For example the listing ITC Benguiat Gothic appears in the B section on page F8. Just ignore the ITC and run your search with beng in this example.

(2) Keeping your hard disk tidy is a smart idea. Unfortunately the Bitstream file names are cryptic. Just what typeface is 1103a__.PFM or TT1103m__.TTF? Run a search for 1103 and up pops Aachen BT.

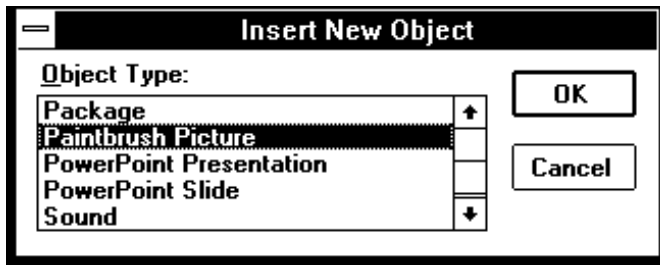
(3) You've been using Cancun for your headlines and it looks a little loose. Perhaps your contemplating kerning this typefaces with FontFiddler. How many pairs are available? Run a search for cancun and this card pops up. It only contains 173 pairs and has the Windows style incorrectly set to Don't Care. Launch FontFiddler and kern till your hearts content. Don't forget to change the Windows style to Script.

(4) You love Bembo but can't remember what the Bitstream name for this typeface is so you can install it on your system. Run a search for Bembo and you navigate to Aldine 401.

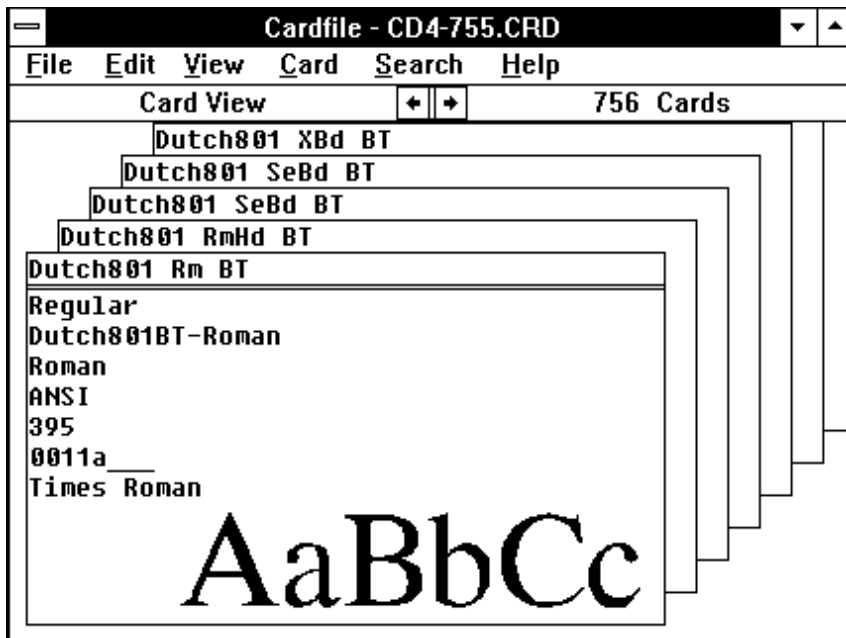
(5) You have a job producing a wedding invitation. Naturally you want to use a typeface that's warm and fuzzy. One that looks like it was hand written. How many typefaces fit the bill? Run a search for Script and up pops Amazone. There are 49 Bitstream and 3 Corel Script typefaces. You can move to the next card by pressing F3.

Fighting The Bull With OLE

Windows Cardfile 3.1 is an OLE (Object Linking and Embedding) compliant application. While it's beyond the scope of this document to explain how OLE works and all of it's features I strongly suggest that you read the appropriate sections in your Windows user guide for a complete explanation. Your Corel user guide also contains information on OLE. Here are 3 valuable procedures you can perform using OLE and your Cardfile database.



(1) You can insert type specimens in your database. In CD4-755.CRD select Picture from the Edit menu and then Insert Object from the Edit menu. In the Insert New Object dialog box locate Paintbrush Picture and double click on this line to launch it. Paintbrush should pop up on your screen. The next step is to specify your type in Paintbrush with the Fonts option from the Text menu. I prefer to use 48 point black type on a white background, and only a few characters from the typeface like AaBbCc. Know you need to enter your text by selecting the type tool (abc) from the toolbar. Just click on the page and enter your text. Next use the marquee tool to select just your type. Make sure you select just the type with a tight selection to keep the object as small as possible. To finish this procedure select Copy from the Edit menu and Exit and Return from the File menu. Return to your Cardfile database and select Paste Special from the Edit menu. In the Paste Special dialog box insure that you select Paintbrush Picture Object and click the Paste button to finish this procedure. Drag and drop your specimen into position and then select Text from the Edit menu to finish. Don't forget to save your changes. Be judicious in the number of objects you insert in your database as each one significantly increases the file size. If you ever need to edit your specimen insure that you have selected Picture from the Edit menu in Cardfile and then double click on your specimen to launch Paintbrush. Make your changes and then select Update from the Edit menu or Exit and Return and click the Yes button to update your database specimen.



(2) Another variation of producing type specimens uses Draw 4. The procedure is very similar to the Paintbrush example and starts by selecting CorelDRAW! 4.0 Graphic in the Insert New Object dialog box. The advantage of this procedure is that once your specimen is inserted in your database you can double click on it to launch Draw and your specimen is still artistic text in the original typeface. Edit this text in Draw and select Update or Exit and Return from the File menu to complete this procedure. You will notice that these specimens created in Draw display significantly slower in your database. This procedure works with properly installed TrueType and PostScript fonts.

(3) The last use of this database involves Microsoft Word For Windows (2.0x) It's a clever way to use frequently used text sometimes refereed to as boilerplate. This procedure is particularly handy for generating letters or bids to clients that display your type collection. The procedures are identical to the above. Select Word Document in the Insert New Object dialog box. After your object (an icon in this case) is inserted in your database double click on it to launch Word and generate your letter. I used a related procedure to permit you to open CD-755.CRD with the icon at the top of this document.

You may have other OLE compliant applications on your system that can be used with Cardfile. Maybe you've never used OLE before and aren't even sure which of your applications support it. In Cardfile insure that you have selected Picture from the Edit menu and then select Insert Object. The Insert New Object dialog box will list all your supporting applications.

Special Thanks

Without the generous help of Costas Kitsos and Dennis Harrington of FontMinder and FontFiddler fame this database would not have been possible.

Saying Thanks

If you find this database useful please make a contribution to your local cancer society.

Dedication

For Pam. Your memory is my beacon of hope on a dark night.

Legal Notice

© - Copyright - 1993 - Steve Shubitz - All Rights Reserved. This database and the document you are reading may **not** be distributed in any form (including a disk bundled with a book) without the prior written consent of Steve Shubitz. No warranties expressed or implied are provided. The data is believed to be accurate and has undergone extensive validation and testing. Be clear that you use this data at your own risk.

END OF DOCUMENT - VERSION 1.0